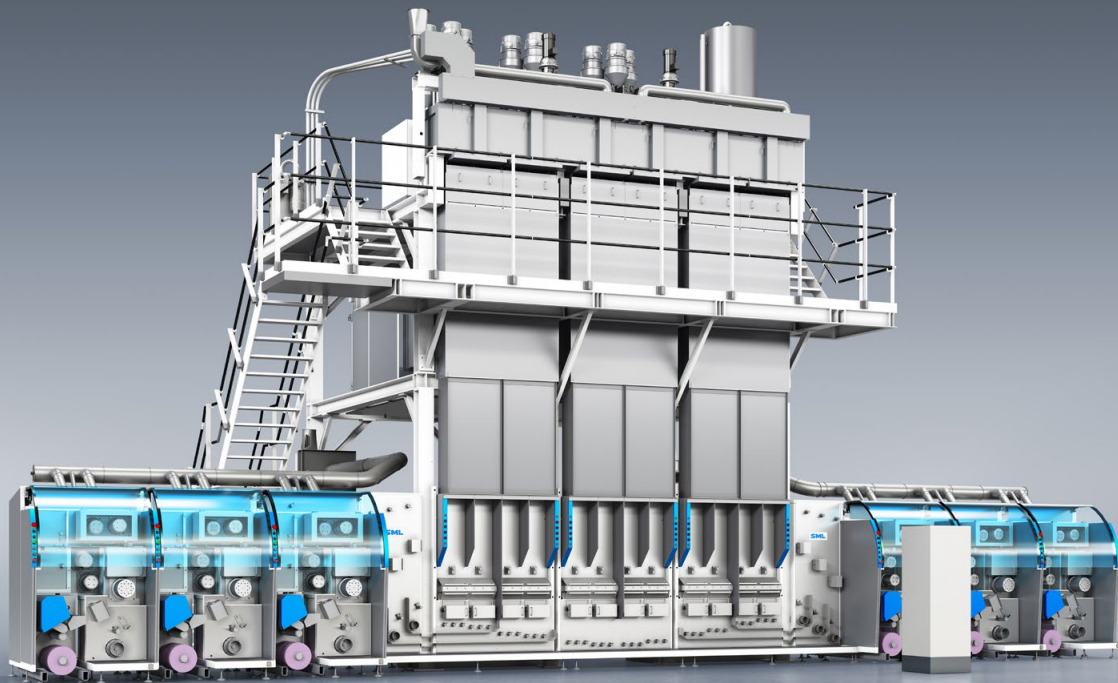


# SML

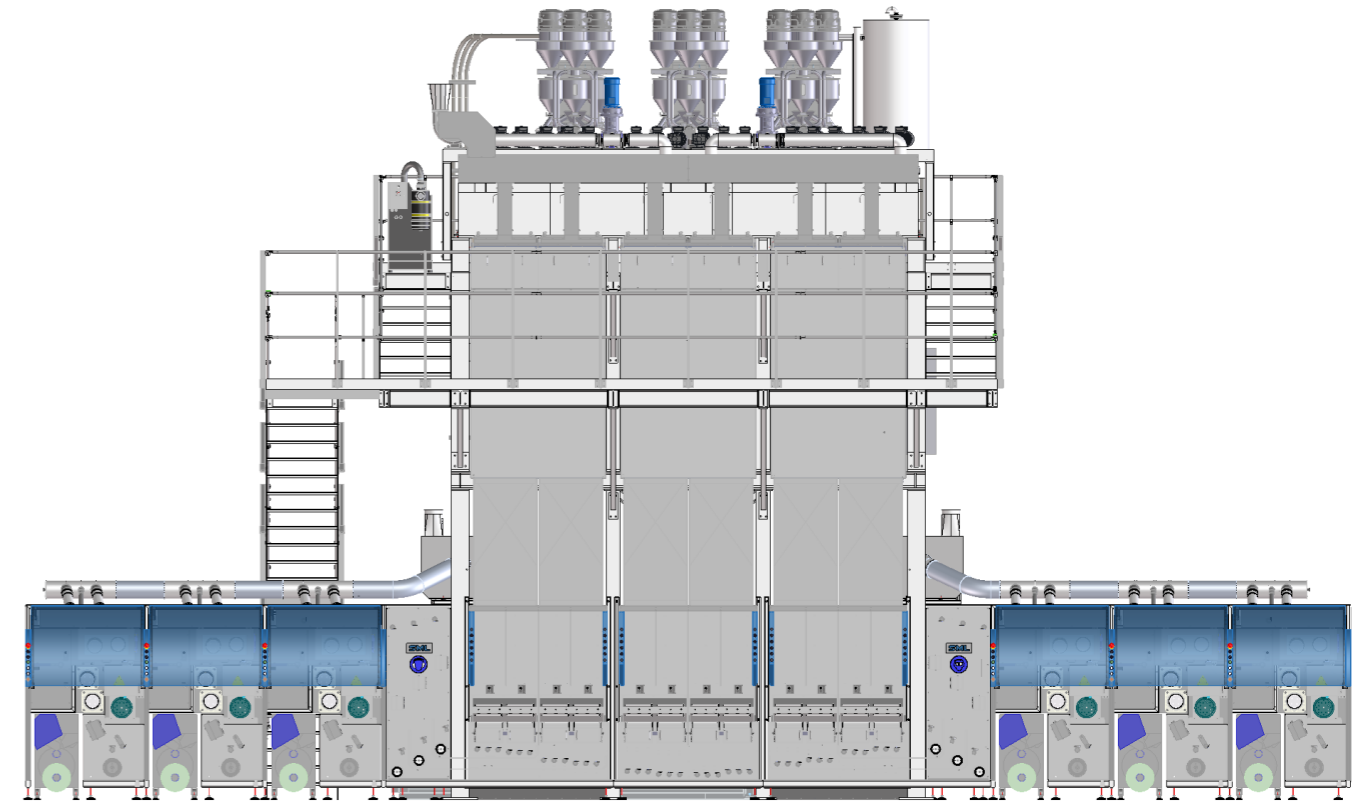
EXTRUSION LINES – ENGINEERED TO PERFORM ▶



## AUSTROFIL

BCF PP  
TRICOLOUR 6x2

SML's newly developed AUSTROFIL BCF „TRICOLOUR“ 6x2 spinning line strikes with its remarkable output capacity of 480 kg/h at two different modes of production. Either one big tricolour lot with 12 ends or three different monocolour lots with 4 ends each can be produced simultaneously. In both modes, highly crimped BCF yarns with outstanding properties – and with up to 700 filaments – are ready to be manufactured.



BCF PP 6x2 TRICOLOUR, 12 ENDS	
<b>Polymer</b>	PP, MFR 18-27
<b>Titer Range</b>	1,000 – 5,000dtex
<b>Dpf range</b>	5 up to 28dtex/fil
<b>Output capacity</b>	480 kg/h, 11.5 to/day

#### KEY FEATURES:

- 480 kg/h of tricolour or monocolour BCF yarn
- Simultaneous production of three independent monocolour lots – each 160 kg/h
- SML's newly developed spinpack design for up to 700 filaments per yarn
- Intuitive Human Machine Interface (HMI)
- Short set-up time for spinpack changes
- Superior SML extrusion technology, combined with convenient gravimetric dosing systems
- Highly crimped BCF yarns due to SML's patented texturing system and multi-wrap cooling drums
- Compact line design with a small footprint and an unmatched low line height
- Horizontal line set-up for easy string-up and maintenance
- Long-time proven 2-end winding technology for highest efficiency in production
- Ready for SML's brand-new data logging & analysing tool „bitWise“

#### LINE DIMENSIONS:

- Length: 16,000mm
- Width: 11,000mm
- Height: 12,000mm
- Spinning height: 5,500mm



#### RAW MATERIAL HANDLING AND DOSING

- Accurate gravimetric loss-in-weight dosing
- Automatic material feeding for main components as well as for additives
- Boxes for accurate resin supply available

#### 3 EXTRUDERS

- 75mm screw diameter and an L/D ratio of 28 for maximum output and top melt quality
- Static mixers ensuring best colour evenness
- Each extruder is equipped with a separate high-end dosing system
- Highly advanced technology by SML – in-house extrusion know-how & development

#### SPINNING EQUIPMENT

- 18 spinpumps, each with 2 outlets, are providing melt for 36 spinnerets
- Newly developed spinpack design, allowing a huge amount of filaments and very short set-up times
- Oil-heated spinning head for very accurate and stable melt treatment and a wide processing range – no DIPHYL handling necessary

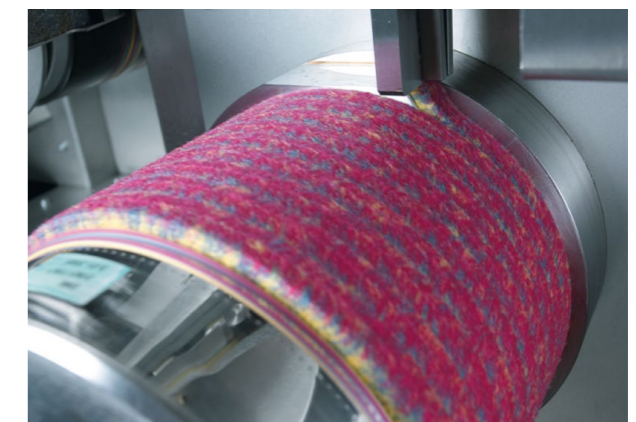
#### 3 QUENCHING UNITS

- For the accurate and independent cooling of three different monocolour lots as well as for one big tricolour lot
- Temperature and speed controlled, with 3 horizontal and adjustable zones in each unit

#### STRETCHING AND TEXTURING SYSTEMS

- 6 feeding rolls for constant yarn take-up from the melt
- Swiss made godets for best yarn treatment and reliable stretching
- Patented texturing system for highest crimp
- Multi-wrap cooling drum for intensive relaxation of the yarn plug

WINDER DATA FOR BCF LINES	
<b>No. of yarns</b>	2
<b>Core diameter</b>	73
<b>Traverse length</b>	250mm
<b>Bobbin diameter</b>	max. 320mm
<b>Mechanical winding speed</b>	max. 3,500 m/min





EXTRUSION LINES – ENGINEERED TO PERFORM ▶

**SML - Head Office**

Gewerbepark Ost 32  
A-4846 Redlham, Austria  
Phone: +43 7673 90999 0  
E-mail: [sml@sml.at](mailto:sml@sml.at)  
[www.sml.at](http://www.sml.at)

**SML - Machinery Far East Sdn Bhd**

(1029958-P)  
1201 Block B, Menara Amcorp  
No.18 Jalan Persiaran Barat  
46050 Petaling Jaya  
Selangor Darul Ehsan,  
Selangor, Malaysia  
Phone: +60 3 7955 9098  
Fax: +60 3 7955 9981  
E-mail: [yen@sml.at](mailto:yen@sml.at)

**SML - Beijing Office**

Unit 1410, Landmark Tower  
No. 8 North Dongsanhuan Road  
Chaoyang District  
100004 Beijing, P.R. of China  
Phone: +86 10 6590 0946  
Fax: +86 10 6590 0949  
E-mail: [sml@sml.bj.cn](mailto:sml@sml.bj.cn)

**SML - Moscow Office**

Ogorodny proezd, 5  
Building 6, office 504  
127254 Moscow  
Russia  
Phone: +7 495 618 8007  
Fax: +7 495 619 5961  
E-mail: [kna@sml.at](mailto:kna@sml.at)

**SML - North America Service Inc.**

Suite 204  
85 Eastern Avenue  
Gloucester MA 01930  
USA  
Phone: +1 978 281 0560  
E-mail: [jom@sml.at](mailto:jom@sml.at)

100%  
eXtrusion  
SPINNING LINES

ANALYSES | DEVELOPMENT

PRE-TESTED PERFORMANCE | DELIVERY ON TIME

SERVICE SUPPORT | CUSTOMER SATISFACTION

[www.sml.at](http://www.sml.at)