

# ▶ sheet lines

**SML**  
EXTRUSION LINES – ENGINEERED TO PERFORM ▶

---

▶ **RECYPET –  
RECYCLING EXTRUSION**

---



**Extrusion lines –  
engineered to perform**

# Benefit from the best of two worlds

In combination with the compact VACUREMA® system, RecyPET from SML is the ideal solution for processing PET bottle flakes and regrind. This line is well suited to large amounts of recycled material with a consistent quality.

The advantages: No discoloration, low energy consumption and no pre-drying required.

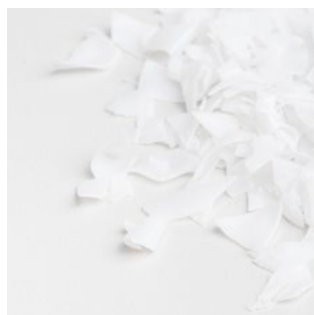
## Key Features

- Designed for the highest amount of post consumer or post industrial flake material
- Decontamination / dehumidification process in minimised time
- Minimised iV drop in relation to the input material
- Extrusion and material treatment system VACUREMA from the world market leader EREMA
- Optimised for high outputs of monolayer sheets

## GRANULES



virgin material



film flakes



bottle flakes



### **The bright variety of SML's technology**

PET sheet products are primarily used for food and consumer goods like trays, cups and lids. In addition, pharmaceutical and medical products have become important areas of application.

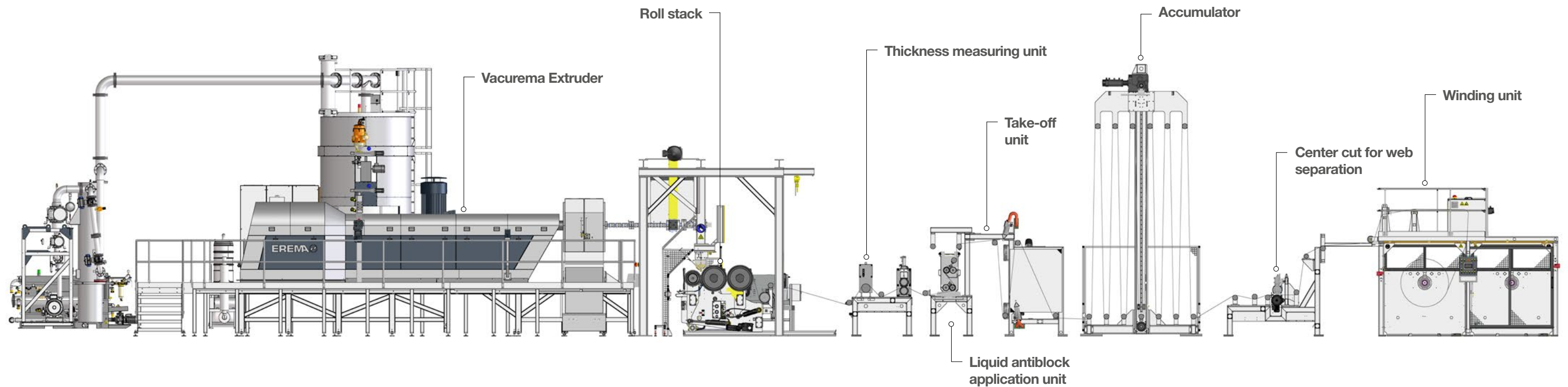


### BASIC DESIGN INCLUDES

- ▶ Complete extrusion unit with a reactor, extruder, backflush filter, melt pump and static mixer
- ▶ RecyPET 4 and below: a manual die / RecyPET 5 and up: an automatic die
- ▶ Roll stack with SPG roll technology, a temperature control unit, hydraulics and safety devices
- ▶ Thickness gauge
- ▶ Edge trim unit with blade cut and an edge trim mill
- ▶ Winder W501
- ▶ Automatic control system

### OPTIONS

- ▶ Upgrade for coextruded A/B/A sheet
- ▶ Inline liquid antiblock application device
- ▶ One shaft winding unit with two webs up to a certain width
- ▶ Inline PE lamination
- ▶ Upgrade of take-off units for optically sensitive sheets
- ▶ Inline sheet inspection system
- ▶ Inline edge trim recycling system (from the mill directly to premixing)
- ▶ Upgradeable for EFSA and FDA conform sheet



### CONFIGURATION

	RecyPET 1	RecyPET 2	RecyPET 3	RecyPET 4	RecyPET 5	RecyPET 6	RecyPET 7	RecyPET 8
Max. possible net width (mm)	800	800	950	1,150	1,380	1,530	1,730	1,930
150 µm	590	590	700	850	1,020	1,130	1,280	1,420
500 µm	830	940	1,10	1,350	1,690	1,800	2,030	2,260
1,000 µm	820	660	790	960	1,150	1,480	1,440	1,600
1,200 µm	510	580	690	830	1,000	1,110	1,260	1,400

Typical thermoforming application	++
PET	++
PP	~
PS	~
Optical film	-
PET / PE (recycled in reduced amount)	--
PET / PE / EVOH (modifications required)	--
GAG sheet	--

▶ **Take advantage  
of our global  
leadership in  
extrusion  
technology.**

**ANALYSES  
DEVELOPMENT  
PRE-TESTED PERFORMANCE  
DELIVERY ON TIME  
SERVICE SUPPORT  
CUSTOMER SATISFACTION**

**SML**  
EXTRUSION LINES – ENGINEERED TO PERFORM ▶

**SML - Head Office**

Gewerbepark Ost 32  
4846 Redlham  
Austria  
Phone: +43 7673 90999  
E-mail: [sml@sml.at](mailto:sml@sml.at)  
[www.sml.at](http://www.sml.at)

**SML - Machinery Far East Sdn Bhd**

(1029958-P)  
1201 Block B, Menara Amcorp  
No.18 Jalan Persiaran Barat  
46050 Petaling Jaya  
Selangor Darul Ehsan,  
Selangor, Malaysia  
Phone: +60 3 7955 9098  
E-mail: [yen@sml.at](mailto:yen@sml.at)

**SML - Moscow Office**

Ogorodny proezd, 5  
Building 3, office 408  
127254 Moscow  
Russia  
Phone: +7 495 618 8007  
E-mail: [kna@sml.at](mailto:kna@sml.at)

**SML - Beijing Office**

Unit 1410, Landmark Tower  
No. 8 North Dongsanhuan Road  
Chaoyang District  
100004 Beijing, P.R. of China  
Phone: +86 10 6590 0946  
E-mail: [sml@sml.bj.cn](mailto:sml@sml.bj.cn)

**SML - North America  
Service, Inc.**

Suite 204  
85 Eastern Avenue  
Gloucester MA 01930  
USA  
Phone: +1 978 281 0560  
Mobile: +1 978 394 1553  
E-mail: [jom@sml.at](mailto:jom@sml.at)



[www.sml.at](http://www.sml.at)