

▶ cast  
film  
lines

**SML**  
EXTRUSION LINES – ENGINEERED TO PERFORM ▶

▶ STRETCH WRAP FILM

*PowerCast XL*



**Extrusion lines –  
engineered to perform**

# Film production at unparalleled levels

SML's PowerCast XL is an ultra-high-performance stretch film extrusion line that combines quantity with top quality.

The PowerCast XL stands out due to its production in a 4 m-width and its flexibility to handle 2-inch and 3-inch hand, machine and jumbo rolls at high production speeds.

This facilitates throughputs ranging from 2,400 kg/h to 4,200 kg/h.

## Key Features

- Narrow design, low space requirements
- Low power consumption thanks to energy saving extrusion technology
- Lowest labor cost per kg film
- High output even with a thin gauge
- Superior film quality due to optimised chill roll design
- Excellent production stability at high speeds

## PowerCast

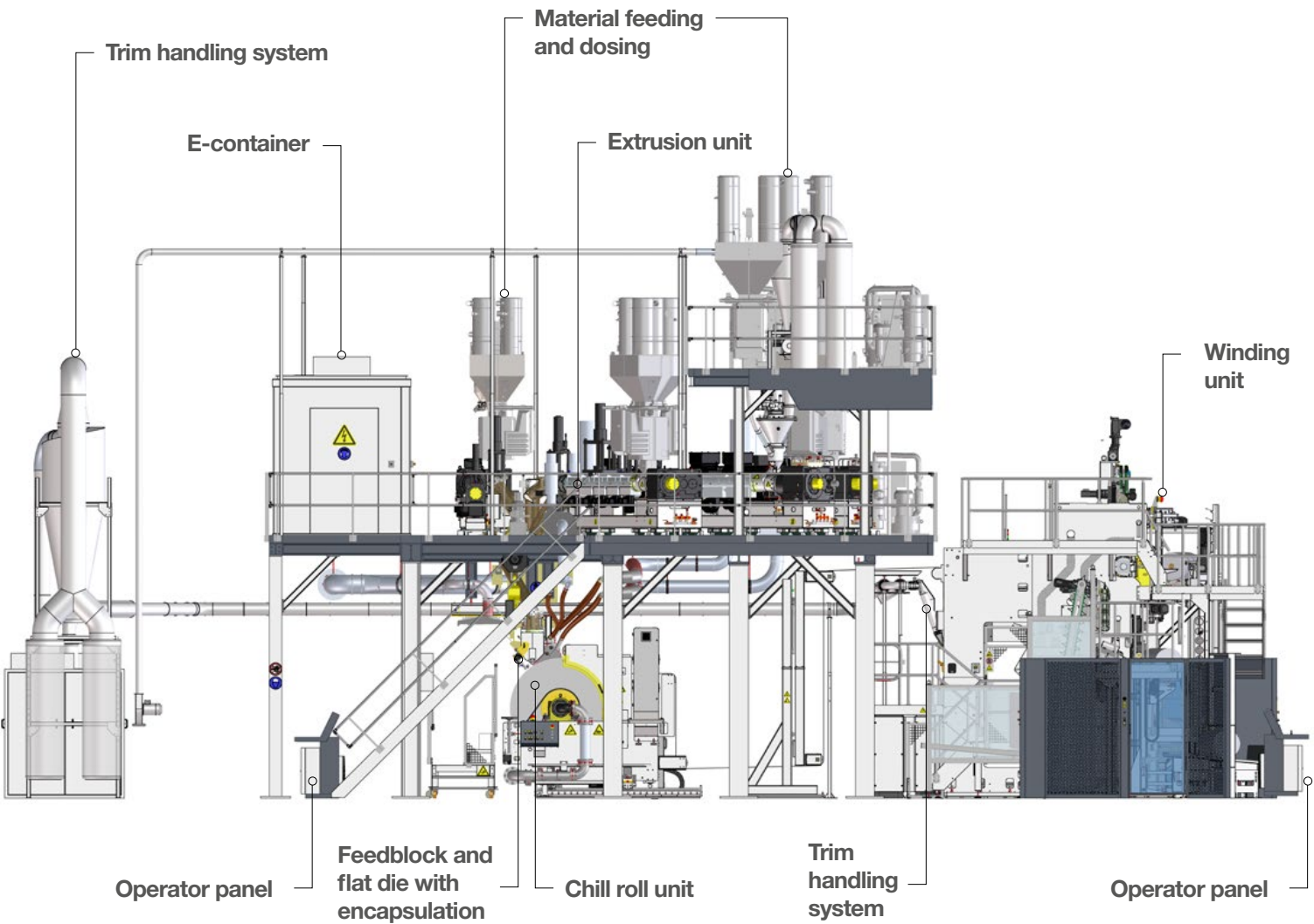
---

- ▶ 4 meter wide (8-up) standard stretch film line
- ▶ 4.5 meter wide (9-up) XL stretch film line
- ▶ Choice between 7 to 67 layers



**Products:**

- Super power stretch
- Automatic stretch
- Hand stretch
- Cling film



**PRODUCT SPECIFICATIONS**

Products	super power stretch, automatic stretch, hand stretch, cling film	
Film thickness range	8 - 50 µm	
Film final width double turret	8 x 500 mm, 9 x 450 mm, 10 x 400 mm	
Film final width triple turret	9 x 500 mm, 6 x 750 mm	
Film structure	7 - 67 layers	
Production speed	up to 800 m/min	
Net output value <b>PowerCast</b>	12 µm	> 2,000 kg/h
	23 µm	3,400 kg/h

**EXTRUDER CONFIGURATIONS**

<i>PowerCast<sup>®</sup>S</i>	<i>PowerCast<sup>®</sup>L</i>	<i>PowerCast<sup>®</sup>XL</i>
Gravimetric batch dosing system with 2 components. Option: 3 or 4 components		
7 extruders	7 extruders	7 extruders
2 x 90/33 each 600 kg/h	2 x 90/33 each 950 kg/h	2 x 90/33 each 950 kg/h
5 x 60/28 each 240 kg/h	5 x 75/33 each 380 kg/h	4 x 75/33 each 450 kg/h
		1 x 90/33 600 kg/h
SML advanced heaters for extruder barrels		
Edge encapsulation extruder 45/28D		
7-layer feedblock (optional 9, 11, 13, 55, 67 layers)		
Automatic flat die: 4,800 mm		5,450 mm

**WINDING UNIT**  
Winder W4000-4S 3T



**CHILL ROLL UNIT**

- ▶ Primary chill roll Ø 1,600 mm, width 5,500 mm
- ▶ Optional chill roll Ø 400 mm, width 5,500 mm
- ▶ Automatic positioning
- ▶ IR thickness measurement
- ▶ Alternative: X-ray or Beta sensor
- ▶ Oscillating frame
- ▶ Cut-resistant guiding rolls

**WINDER W4000-4S**

- ▶ 2 turrets for total 8 x 500 mm / 9 x 450 mm / 10 x 400 mm
- ▶ triple turret for total 9 x 500 mm, 6 x 750 mm
- ▶ Hand, machine and jumbo rolls (up to 60 kg) on 2-inch and 3-inch cores
- ▶ Ultimate short film tail for a perfect roll finish
- ▶ Alternative: Winder W4000-2S

**EDGE TRIM REFEEDING SYSTEM**

- ▶ Recycling unit with reel feeder for pelletising of edge trims and start-up rolls.  
Alternative: Vertical scraptruder (fluff refeeding system).

Various roll widths: 400/450/500/750 mm  
Ultra short film tail

► **Take advantage  
of our global  
leadership in  
extrusion  
technology.**

**ANALYSES  
DEVELOPMENT  
PRE-TESTED PERFORMANCE  
DELIVERY ON TIME  
SERVICE SUPPORT  
CUSTOMER SATISFACTION**

**SML**  
EXTRUSION LINES – ENGINEERED TO PERFORM ►

**SML - Head Office**

Gewerbepark Ost 32  
4846 Redlham  
Austria  
Phone: +43 7673 90999  
E-mail: [sml@sml.at](mailto:sml@sml.at)  
[www.sml.at](http://www.sml.at)

**SML - Machinery Far East Sdn Bhd**

(1029958-P)  
1201 Block B, Menara Amcorp  
No.18 Jalan Persiaran Barat  
46050 Petaling Jaya  
Selangor Darul Ehsan,  
Selangor, Malaysia  
Phone: +60 3 7955 9098  
E-mail: [yen@sml.at](mailto:yen@sml.at)

**SML - Moscow Office**

Ogorodny proezd, 5  
Building 3, office 408  
127254 Moscow  
Russia  
Phone: +7 495 618 8007  
E-mail: [kna@sml.at](mailto:kna@sml.at)

**SML - Beijing Office**

Unit 1410, Landmark Tower  
No. 8 North Dongsanhuan Road  
Chaoyang District  
100004 Beijing, P.R. of China  
Phone: +86 10 6590 0946  
E-mail: [sml@sml.bj.cn](mailto:sml@sml.bj.cn)

**SML - North America Service, Inc.**

Suite 204  
85 Eastern Avenue  
Gloucester MA 01930  
USA  
Phone: +1 978 281 0560  
Mobile: +1 978 394 1553  
E-mail: [jom@sml.at](mailto:jom@sml.at)



[www.sml.at](http://www.sml.at)